

Pilgrim Primary Academy Knowledge Organiser

Topic: What's eating you?

Year Group: 4

Strand: Science

What I know already:

- I know animals (including humans) need the right nutrition to be healthy.
- I know animals and humans get nutrition from what they eat.
- I know some animals only eat meat, some animals only eat plants, and some animals eat plants and meat.

Key vocab:

Human digestive system:

Digestion, mouth, tongue, saliva, oesophagus, transports, stomach acid, enzymes, small intestine, vitamins, large intestine, colon.

Teeth:

Incisors, canines, molars, chewing, grining, floss

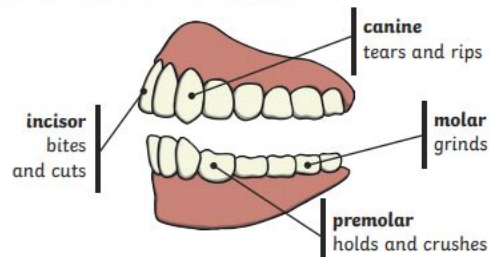
Food chain:

Sun, producers, prey, predators, carnivore, herbivore, omnivore

What will I know by the end of the unit:

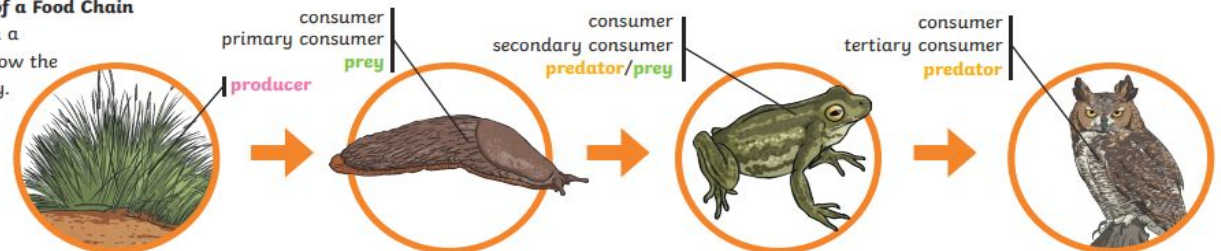
- How the human digestive system works.
- What the main organs in the human digestive system are and what they do.
- The different types of teeth humans have and their functions.
- How we can keep our teeth healthy.
- How to make and understand food chains.

Human Teeth and Their Functions

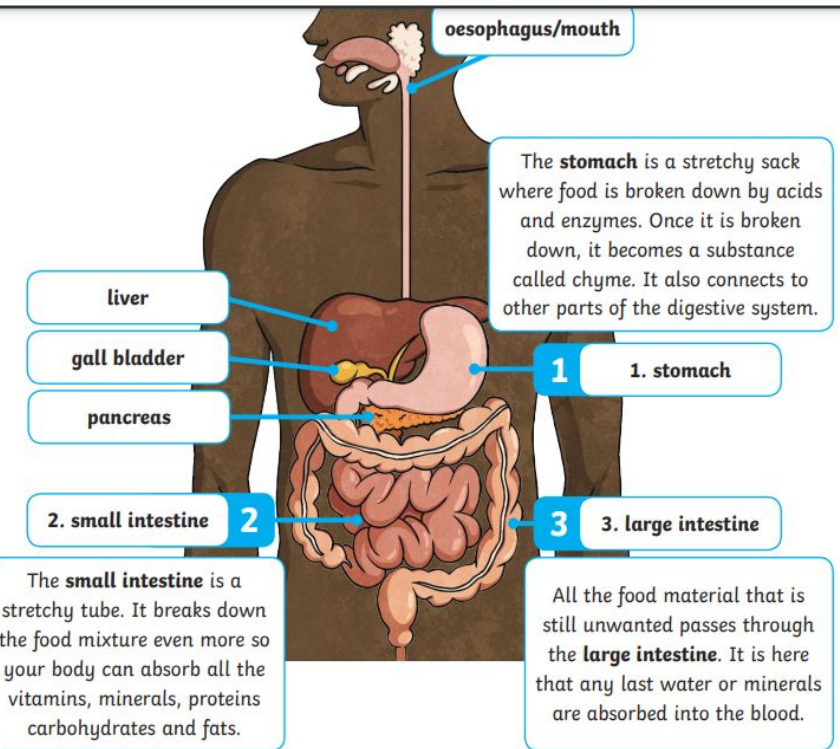


An Example of a Food Chain

The arrows in a food chain show the flow of energy.



Key knowledge:



Pilgrim Primary Academy Knowledge Organiser

Topic: What's eating you?

Year Group: 4

Strand: Science

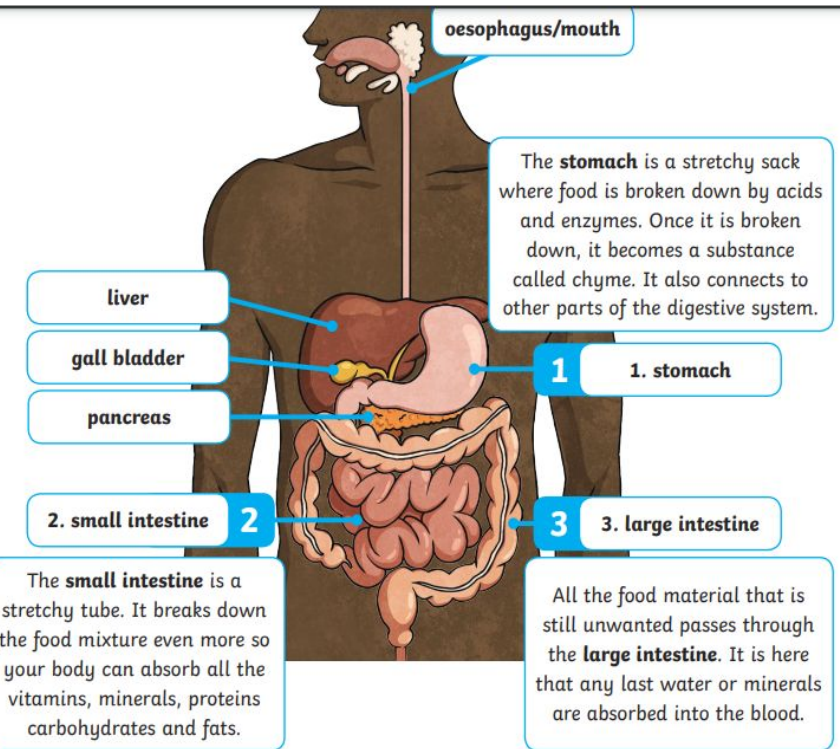
What I know already:

- I know animals (including humans) need the right nutrition to be healthy.
- I know animals and humans get nutrition from what they eat.
- I know some animals only eat meat, some animals only eat plants, and some animals eat plants and meat.

What will I know by the end of the unit:

- That humans have a digestive system that breaks down their food
- Some of the main organs in the human digestive system
- The different types of human teeth
- How we can keep our teeth healthy.
- Explain what animal may eat another

Key knowledge:



Key vocab:

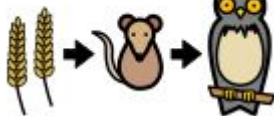
Digestive system:



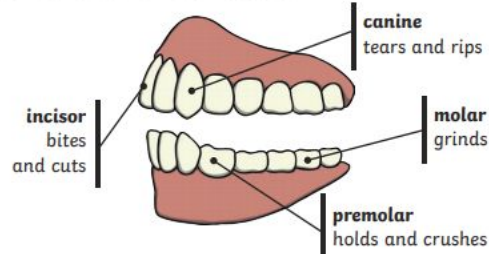
Teeth



Food chain:



Human Teeth and Their Functions



An Example of a Food Chain

The arrows in a food chain show the flow of energy.

